



GIVING
SINGLE
MOTHERS

*Hope and
a Future*

cliMb
Wyoming[®]

2015
PROGRESS
REPORT



30 Years of CLIMB Wyoming

OUR MISSION

CLIMB Wyoming is a non-profit organization that trains and places low-income single mothers in careers that successfully support their families.



A WORD FROM OUR FOUNDER

Hello Friends of CLIMB,

What an incredible year for CLIMB Wyoming! Enclosed in this progress report are the data and stories that we celebrate with you as your passion for and investment in our work continues to make transformative and lasting change for single-mother families in our great state.

On the cusp of our 30th year, we see how our approach intersects with new research and theories that provide more context to working with populations in poverty. We know that the structure and safety we create in our therapeutic model allows women who have been overwhelmed by the stresses of poverty to quickly work toward the goal of a job.

We are recognized by the Aspen Institute as a “Promising Program” using a two-generation (2Gen) approach. Core to the 2Gen approach is the existence of Social Capital: the family and friends that help influence success through trusted information, support and encouragement. CLIMB has created a program that serves groups of women for this very purpose—to help them build the social networks that will support them long after they complete the CLIMB program. Many of our graduates talk about the incredible long-term impact of the close friendships and networks they developed at CLIMB and tell us that these relationships are making all the difference in their family stability.

The coming year will be one of discovery for us. We will complete an analysis of over 10 years of mental health data and explore how to share more details about what we know so that other programs, agencies and families will benefit. And as we turn toward a future of sharing our expertise to make a greater impact, we remain fundamentally committed to offering a successful program to those in Wyoming who are most in need. We are honored every day to work alongside women who are brave enough to make hard decisions, have hard conversations and do hard work. We witness the incredible transformation as these women understand how to access the resources within them, and how a consistent job is a way back into a life with purpose and meaning.

Your investment in CLIMB makes this possible. We are so very grateful for your support.

Sincerely,

Ray Fleming Dinneen, Psy. D.



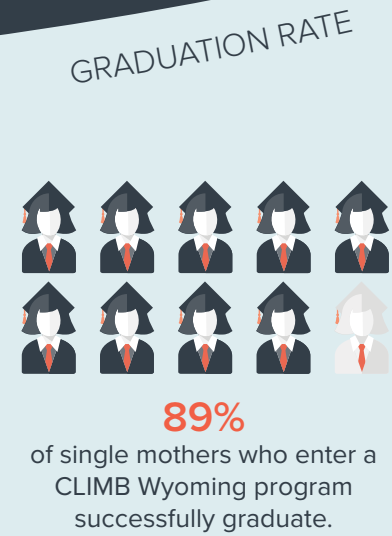
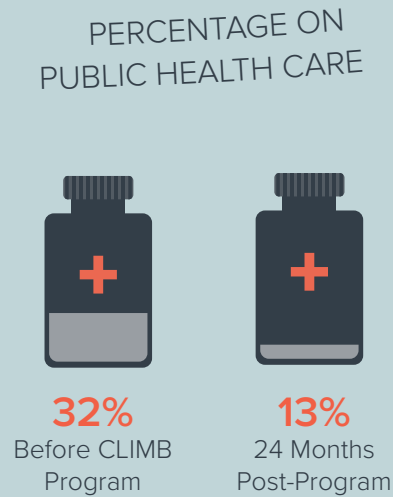
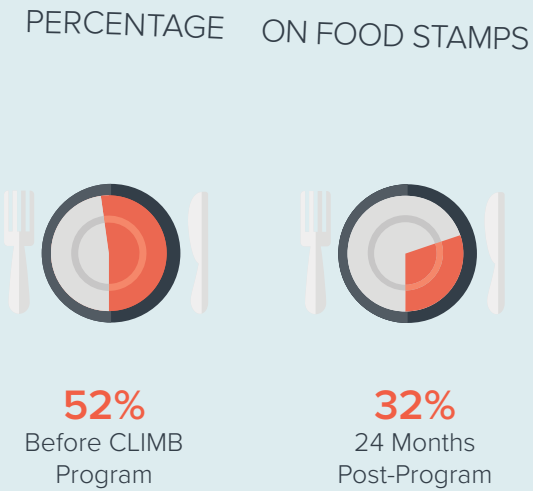
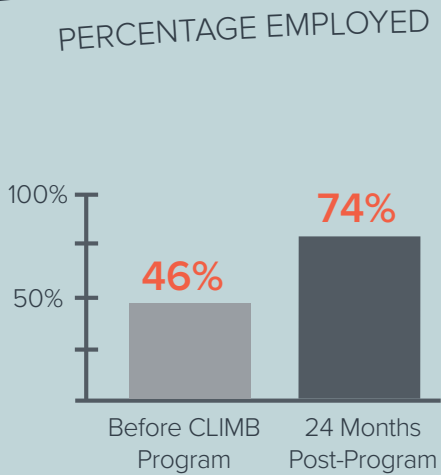
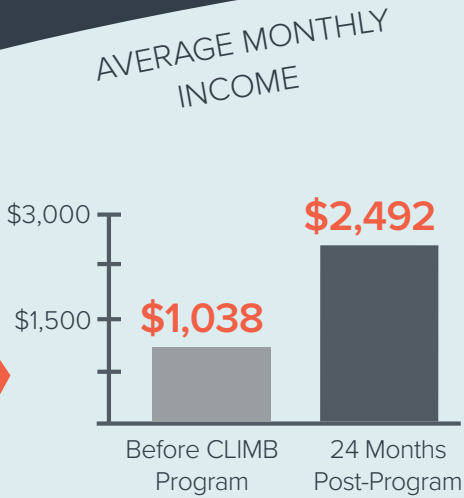
THE NEED, OUR APPROACH, AND IMPACT

The uniquely comprehensive CLIMB program model was developed in 1986 to help move single mothers out of poverty. To date, the program has helped more than 1,900 families reach self-sufficiency, the effects of which will be felt for generations to come. To meet Wyoming's workforce needs, CLIMB trains women to enter a variety of occupations: construction and energy, health care, truck driving, office careers, and more.

The basis of the CLIMB model is a job training and placement program, but there is more to permanent life change than getting a job. Other skills are needed, skills that ensure successful relationships on the job and in the home. Essential elements of the CLIMB model include life skills, parenting skills and mental health services to address personal barriers that have impeded success in the past.



IMPACT



APPROACH



INDUSTRY RESEARCH
Each training is determined by research and local needs.



RECRUITMENT
Referrals come from agencies, direct mail and advertising outreach.



APPLICATION PROCESS
Applicants must meet federal poverty guidelines and be ready to commit.



LIFE SKILLS TOPICS
Skills include parenting, time management, conflict resolution, nutrition and budgeting.



JOB TRAINING
Includes industry-specific skills, resume building, computer skills, mock interviewing and workplace professionalism.



MENTAL HEALTH SERVICES
Group and individual counseling addresses specific participant barriers.



JOB PLACEMENT
Salary, job opportunities and follow-up are coordinated with participants and employers.



CLIMB GRADUATES
Graduates stay connected and refer other single mothers to the program.

THERAPEUTIC PROGRAM APPROACH: Meaningful relationships and a nurturing learning environment drive positive change.

NEED

62%
of employed single mothers in the U.S. work in low-wage jobs with no benefits.

39%
of single mothers with children under age 18 lived in poverty in Wyoming in 2013.

51%
of these mothers with children under age 5 lived in poverty.

1 in 4
children in Wyoming live in a family without a full-time, year-round employed parent.

42%
of U.S. children born to parents at the bottom of the income ladder remain at the bottom as adults.

For statistical source information, please visit www.climbw Wyoming.org.



Casper

AT A GLANCE

Established
2004

Average
participants/year
30

Number of
moms served
384

Number of
children served
696

Average monthly
wage pre-program
\$1,080

Average monthly
wage post-program
\$2,528



SUCCESS STORY *Elisha*

Number of Children: 1

Wage Before CLIMB: Unemployed

Current Occupation: Bus Driver
Natrona County School District

Wage After CLIMB: \$32,073

Elisha completed a CLIMB Truck Driving (CDL)/ Warehouse Tech training in 2015.

“I never would have thought that there are people in this world who care as much as the staff at CLIMB. They set me up for success from the minute I walked in the door, on fire and ready for change in my life. And I know the other participants in my program will be my friends for life.

Before CLIMB, I lost my son for 15 months and was struggling to make a happy home. I finally packed it all up and came to Casper not knowing anyone. Now I keep saying, ‘pinch me, wake me up.’ **I love my job, stopped qualifying for food stamps, and am learning to live on my new income.** I’ll start college again this year to get my associate’s degree in substance abuse counseling. This is the first time in my whole life I haven’t wanted to run away.” — Elisha

Single-mother families living below poverty level in Casper:

with children under age 18 **33%**

with children under age 5 **43%**

US Census Bureau 2013



Cheyenne

AT A GLANCE

Established
1986

Average
participants/year
50

Number of
moms served
779*

Number of
children served
929**

Average monthly
wage pre-program
\$983

Average monthly
wage post-program
\$2,080



SUCCESS STORY *Christina*

Number of Children: 2

Wage Before CLIMB: \$15,706 – Housekeeper

Current Occupation: Outpatient Therapy Coordinator
Life Care Center

Wage After CLIMB: \$28,080

Christina completed a CLIMB Health Care Information Technology training in 2012.

“When I found CLIMB, I was working in housekeeping and ending a relationship. I was distraught and didn’t know how I could make it on my own. I was upset with my situation and thought it couldn’t hurt to try something new.

At the Life Care Center, I’ve moved up and been promoted. I love being able to do stuff for my kids. My daughter went to science and art camps this year. She plays the violin. I’m able to provide all that and pave the way because I have a good job and can help her achieve her goals.

CLIMB gives you tools to make you feel like an independent single person. The staff set me up with the Wyoming Family Home Ownership Program, and I have been working with them for over a year and am getting ready to buy a house. **CLIMB is really a lifetime service—the impact on my life just keeps on going.** — Christina

*since 1986 **since 2004

Single-mother families living below poverty level in Cheyenne:

with children under age 18 **36%**

with children under age 5 **58%**

US Census Bureau 2013

THE CLIMB EMPLOYER PARTNERSHIP

“CLIMB graduates are determined to succeed. They are dedicated and try incredibly hard in their jobs and are open to the feedback that will continue to help them succeed. I would reach out to CLIMB again the next time we have a job opening.”

For employers, CLIMB Wyoming keeps going where other job training programs leave off, providing ongoing support and resources long after job placement.

CLIMB employers witness firsthand how a new career changes the lives of single mothers and their children—just ask Deb English, human resources manager for the Mountain View Clinic in Casper. Deb has hired two CLIMB graduates for open positions in the busy physicians clinic. Each time, these women stood out among the other candidates.

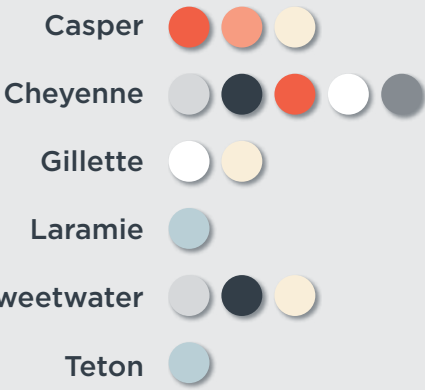
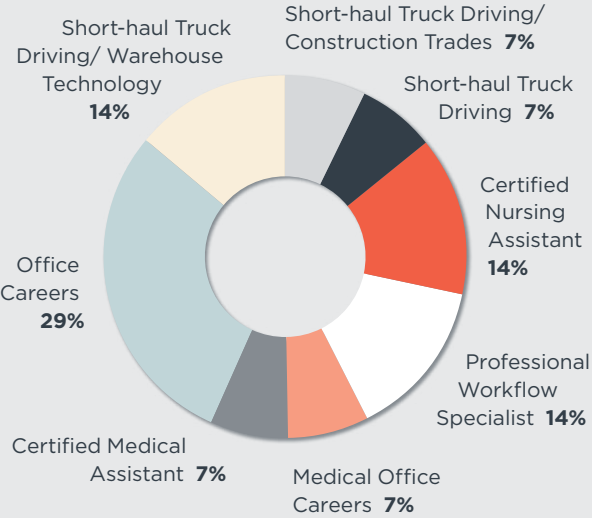
“The CLIMB graduates immediately sent me a thank you card for taking the time to interview them,” says Deb. “One called in every week to see where we were in the hiring process and reiterate her excitement about the position, and why she was a good fit.”

Deb also appreciated CLIMB’s hands-on approach after the job placement process. She found that CLIMB’s support continued as she met with our staff to talk about how the graduates were doing and problem solve together.

No matter who you are, a transition into a new job can be overwhelming, carrying the expectation that you forge new relationships, assimilate into the workplace culture, and prove your ability in your new role. That’s why CLIMB stays engaged with both employers and graduates during this critical transition. The result: a supportive, rewarding partnership that creates long-term success for single-mother families.

—Deb English
Mountain View Clinic, Casper

2015 CLIMB PROGRAM TRAININGS



Thanks to the following employers who partnered with CLIMB in FY15:

Casper

Admiral Beverage Corporation	Garden Square of Casper	Knife River	Primrose Retirement Community
All About Family	Greiner	Kustom Koncepts	Shepherd of the Valley
Big K Services	Halliburton	Life Care Center	Teton Buildings
Brake Supply Co.	Hunting Energy Services	Mountain Plaza Assisted Living	Woodward Machine Corporation
Casper Orthopedics	Hunting Titan	Mountain View Clinic	Wyoming Health Fairs
Cedars Health Clinic	IBC Construction	NCSD #1	Wyoming Medical Center
Community Health Center of Central Wyoming	ITC Electrical Technologies	Poplar Living Center	Wyoming Neurologic Association

Cheyenne

4 Quarters Excavation	Cheyenne Urological	Lowe’s Distribution Center	Traders
A New Concept Optical	Croell Ready Mix	Magic City Enterprises	Uplift
Airgas	Delta Dental of Wyoming	ECO Recycling	Walmart Distribution Center
Align	Dirty Duds	Plumbers & Pipefitters Local 192	Warren Federal Credit Union
Arrow Stage Lines	Employee On-Boarding Specialties	RAM Trucking, Inc.	WINhealth
Aspen Wind Assisted Living	Express Employment Professionals	Sierra Hills Assisted Living	Wyoming Business Council
BioLife Plasma Services	Farmer’s Insurance	Sierra Trading Post	Wyoming Institute of Population Health
Cheyenne Eye Clinic	Faith Financial LLC	Simon Contractors	Zachry Group
Cheyenne Regional Medical Center	HealthWorks	STS Construction	
Cheyenne Regional Medical Group	Knife River	Tom Segrave State Farm Insurance Agency	

Gillette

Admiral Beverage Corporation	Igo Oil & Gas Services	Komatsu Equipment	Pete Lien & Sons
Crook County School District	K&M Energy	Magna Energy Service	Tisdale Creek Ranch, Inc.
DRM, Inc.	Kissack Water and Oil Service	Metz Beverage	
Fusion Energy Services	Knect Home Center	MGM Enterprises	

Laramie

Aspen Valley Heating and Air Developmental Preschool and Day Care Center	Dr. Shevick, DDS	University of Wyoming, Custodial Services	University of Wyoming Residence Life and Dining
HIVIZ Shooting Systems	University of Wyoming, College of Agriculture	University of Wyoming, Department of Human Resources	Wyoming Analytical Laboratories, Inc.
Mountain West Farm Bureau	University of Wyoming, Alumni Association	University of Wyoming Parking and Transit	Wyoming Children’s Law Center
Pence and MacMillan, LLC	University of Wyoming, Bookstore		Wyoming State Geological Survey

Sweetwater Area

Anadarko	Red Desert InstaCare	Talco Trucking	Western Wyoming Beverages
Killer 8 Trucking	Starbucks	Teton Distributors	Wyoming Analytical Laboratories, Inc.

Teton Area

Bank of Jackson Hole	Jenkins Lumber	Teton County Parks and Recreation	Wyoming Landscapes
Blue Spruce Cleaners	Painted Buffalo Inn	US Bank	Yellow Iron Excavating
Core Pilates	Rendezvous Pointe	Wild Flour Bakery	
Green Turf Lawns	Summit Insurance Services		
Jackson Hole Cycle and Saw			





Gillette

AT A GLANCE

Established
2004
Average
participants/year
20

Number of
moms served
226

Number of
children served
485

Average monthly
wage pre-program
\$1,178

Average monthly
wage post-program
\$3,220

Single-mother
families living below
poverty level in
Gillette:

with children
under age 18 **46%**

with children
under age 5 **63%**

US Census Bureau 2013



Zachariah (left) works with his mom Lori (right) at Pete Lien & Sons.

SUCCESS STORY *Lori*

Number of Children: 4
Wage Before CLIMB: \$17,721 – Retail
Current Occupation: Concrete Driver
Pete Lien & Sons
Wage After CLIMB: \$46,800

Zachariah's mom Lori completed a CLIMB Short-Haul Truck Driving (CDL) training in 2014.

"When my mom moved to Wyoming, she had \$20 to her name. We were four months behind on rent, two months behind on our truck payment, and had sold almost everything we had. My younger siblings and I told her to check out CLIMB and go for it. We all just about fell over with excitement when we found out she'd been accepted. We were really proud of her.

CLIMB wasn't just a truck driving school. It helped her deal with things she'd encountered in life that are more important than how to drive. Her job is very physical, but CLIMB equipped her emotionally, too. The biggest change in my mom is that CLIMB really improved her self-esteem.

Now we work together at Pete Lien & Sons. My mom is making so much progress financially. **I attribute a lot of what we have now to CLIMB. And my mom—she's one of the strongest people I know.**" — Zachariah



SUCCESS STORY *Trudy*

Number of Children: 2
Wage Before CLIMB: \$1,300 – Part-time Childcare
Current Occupation: Warehouse Technician
HIVIZ Shooting Systems
Wage After CLIMB: \$26,000

Trudy completed a CLIMB QuickBooks™/ Office Careers training in 2014.

"I am 52 and was recently divorced when I started CLIMB. My goal was simple: I just needed a way to take care of my family. But I ended up gaining about 10 years of knowledge while in the CLIMB program. Anybody can get a job, but with CLIMB I got a career where I'm making plans for the future. Now I wake up on Monday morning and can't wait to go to work!

I'm already in a supervisory position and received a raise within one month of employment. It's a wonderful feeling to be off welfare—it feels good to meet my kids' needs. **Our family is so good now—there's peace where there was none before. My kids aren't nervous anymore. Dinner is there, home is there.** I tell people interested in CLIMB that you have to be ready to give it 100 percent. In return, it will change your life." — Trudy



Laramie

AT A GLANCE

Established
2004
Average
participants/year
20

Number of
moms served
219

Number of
children served
381

Average monthly
wage pre-program
\$948

Average monthly
wage post-program
\$1,772

Single-mother
families living below
poverty level in
Laramie:

with children
under age 18 **52%**

with children
under age 5 **54%**

US Census Bureau 2013



RETURN ON INVESTMENT

Stephanie completed Casper's Certified Medical Assistant training in 2014.

"At CLIMB I learned that I am capable of doing a lot more than I used to. I trust myself and my decisions. At CLIMB I went through an emotional process that helped me heal. It was so important to build that foundation so that I could be healthy and my family could be healthy. I love my job! I work in family medicine and have also trained as a scribe. I learn new things every day. In the future, I plan to go back to school to become a nurse."

My kids are doing a lot better now, too. Because I am less stressed about finances, they are more relaxed and focused on their own interests: music and football and running track. I am confident now and I am looking into buying a home!"



Stephanie

35

YEARS OLD

3

CHILDREN

\$21,775

INCREASE
IN ANNUAL
WAGES

	before CLIMB	after CLIMB
ANNUAL WAGE 	\$9,425/year part-time, food/ beverage service	\$31,200/year full-time, Community Health Center
CHILD CARE ASSISTANCE 	\$908/year	no
HEALTH INSURANCE 	no	yes

\$14,775*

CLIMB investment
in Stephanie

*average cost/CLIMB participant
is \$20,000



LIFE SKILLS
20%



JOB TRAINING
50%



MENTAL HEALTH
30%

Return on investment

1.47:1
YEAR ONE

44:1
LIFETIME**

**assumes retirement at age 65 and
no wage increase

FY15 IMPACT

IN FY15 TOTAL EARNINGS
FOR GRADUATES

increased from **\$842,746**
at intake to **\$2,124,335**
at program completion.

AT PROGRAM START

49%
of participants were
unemployed
29%
were employed **part-time**.

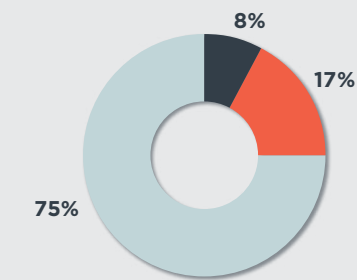
AT PROGRAM END

85%
of graduates were
employed full-time.

For every 100 families
CLIMB serves
Wyoming realizes an
ANNUAL SAVINGS
of
\$850,000
in Medicaid and TANF
(Temporary Assistance for
Needy Families) savings
and eliminated incarceration
and foster care costs.

FY15 FINANCIALS

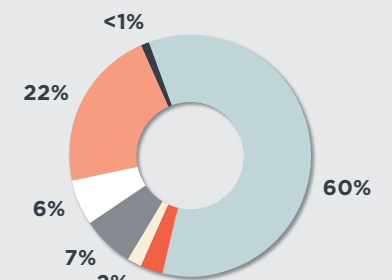
Program Expenses



\$3.7 MILLION BUDGET*

- Direct Program Services
- Administrative
- Fundraising

Revenue Spread

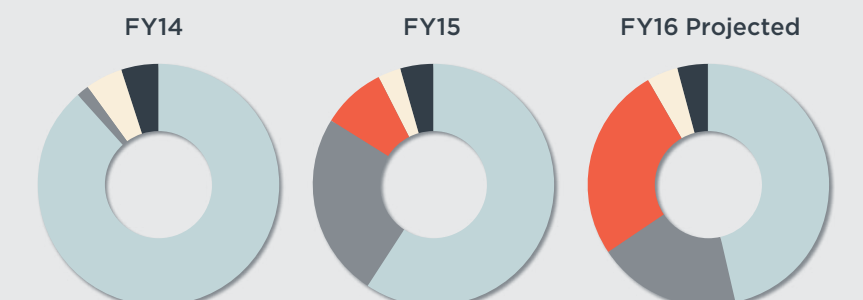


- Federal
- State
- County/City
- Private Donation
- Corporate Donation
- Foundation Donation
- Endowment

* Our entire budget is allocated
toward program costs, including
admin and fundraising, without
which we would not be able to
deliver direct services to single
mothers.

GOVERNMENT FUNDING DIVERSIFICATION

Over the past year, CLIMB has built new partnerships and secured new government funding opportunities to ensure that we have a sustainable and diverse public funding model.



- Federal TANF
- Federal USDA
- State
- County
- Cities



Sweetwater Area

AT A GLANCE

- Established 2007
- Average participants/year 20
- Number of moms served 130
- Number of children served 278
- Average monthly wage pre-program \$1,073
- Average monthly wage post-program \$3,074

Single-mother families living below poverty level in Rock Springs:

with children under age 18 41%

with children under age 5 58%

US Census Bureau 2013



Sweetwater Program Reopens in Rock Springs

CLIMB Wyoming joined legislative, county and city officials from the Sweetwater community to celebrate reopening our doors in Rock Springs after a yearlong closure.

Financial support from Sweetwater County Commissioners, funding opportunities from the cities of Rock Springs and Green River, and ongoing support from private and corporate donors in the region diversified CLIMB’s funding enough to restart the successful program.

Since departing the Sweetwater area in October 2014, CLIMB Wyoming has also secured two new public funding opportunities, including access to new state funding for job placement and training that was passed by the legislature in early 2015. The state funding will provide a match for CLIMB’s private and corporate donations in the coming year.

State Senator Bernadine Craft says the community really came together to ensure that CLIMB has the local support it needs to be sustainable over the long term. “We are doing this so we never have the heartbreak of having to pull a program that changes lives from Sweetwater County.”

The first of two annual CLIMB programs in Sweetwater County launch in 2016.

“The more people who have the opportunity to improve their station in life, the better off our community as a whole will be.” — Carl Demshar, Rock Springs Mayor

Pictured above: Partners in the effort to reopen CLIMB Wyoming to serve the Sweetwater community celebrate CLIMB’s return during a press conference on Thursday, July 30, 2015. **Front row from left:** Rock Springs Chamber of Commerce CEO Dave Hanks, Green River Mayor Pete Rust, Rock Springs Mayor Carl Demshar, Commissioner Don Van Matre and State Senator Bernadine Craft **Back row from left:** State Senator John Hastert, CLIMB Executive Director Ray Fleming Dinneen, Sweetwater County Commissioner Randy “Doc” Wendling, Rock Springs Councilman Tim Savage, Councilwoman Glennise Wendorf, Commissioner John Kolb, State Representatives JoAnn Dayton and John Freeman



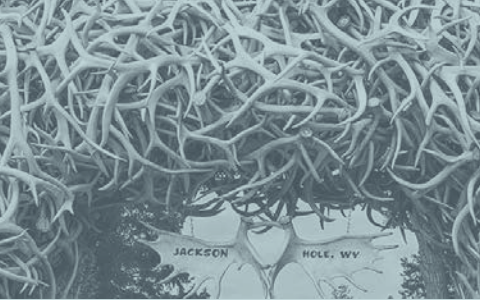
SUCCESS STORY Tiffany

- Number of Children: 1
- Wage Before CLIMB: Unemployed
- Current Occupation: Office Manager Wyoming Landscape
- Wage After CLIMB: \$32,760

Tiffany completed a CLIMB Office Careers training in 2014.

“I always dreaded job interviews. They made me self-conscious, and I always got nervous and didn’t know what to expect. I think I avoided them whenever I could. When I started CLIMB and the staff said that we’d be practicing interviews, I got really anxious. I did three ‘mock interviews,’ and they all felt like the real thing. When CLIMB staff and volunteer interviewers said I’d done great, that really gave me confidence.

When I went in for my real interview, it was easy. There were three people from the company asking me questions, and I wasn’t even nervous. I just felt really well prepared. They didn’t ask me anything that I wasn’t ready to answer. CLIMB definitely challenged me to overcome my fears about the job application and hiring process. But there was a tremendous amount of support, too. It was a powerful combination for me.” — Tiffany



Teton Area

AT A GLANCE

- Established 2004
- Average participants/year 20
- Number of moms served 166
- Number of children served 309
- Average monthly wage pre-program \$1,225
- Average monthly wage post-program \$2,245

Single-mother families living below poverty level in Teton County:

with children under age 18 32%

US Census Bureau 2013



INVESTORS

Fiscal Year (October 2014–September 2015)

This year's CLIMB programs would not have been possible without generous contributions from many individuals and entities.

#1 Properties
71 Construction
Carolyn and Rollin Abernethy
Accentuate
Whitney Agopian
Penne and Scott Ainsworth
Albany County
Albany County Library
Angela and Casey Alexander
Alexis Drake, LLC
Alpha Coal West, Inc.
AmazonSmile Foundation
ANB Bank - Cheyenne
Rod and Sue Anderson
Suzanne Anderson
William Anderson
Heidi and Carter Andrews
Laurie Andrews
Teresa Ankeny
Nancy and Mark Anselmi
Antler Inn, Clarene and Creed Law
Aquila Family
Jessica Arcega
Mary P. Armour
Ryland and Mark Aronowitz
Arp and Hammond Hardware Co.
Meredith Asay and Ben Brandes
AT&T
Connie and Larry Atwell
Aullman Living Revocable Trust
Aztec Construction Co., Inc.
Jim and Audrey Bailey Foundation
Jimmie and Catherine Bailey
Nancy and Lew Baker
Jillian and John Balow
Terry Baltz
Bank of the West

Bank of the West – Cheyenne
Bank of the West Employee Giving Program
Jean Barash
James Barlow
Lee Barlow
Bobbi and John Barrasso
Rosemary and Rich Barrett
Basin Electric Power Cooperative
Barbara and Mike Basinger
Pilar Bass
Battelle Energy Alliance
Jan Bauer
Jennifer and Craig Beastrom
Father Carl Beavers
Alyssa Beck
Trish Becklinger
Sally and Jim Belcher
Mr. and Mrs. Merton J. Bell III
Gainor and Joe Bennett
Allison Bergh
Elena Berlinski
Richard and Bonnie Berry
Best Western Outlaw Inn
Beta Sigma Phi, Gamma Chapter
Yvette Betancourt
BG Real Estate, LLC
Jeremy Bieber, Optimal Physical Therapy
Frances Biederstedt
Curtis Biggs
Sandra Biller
Nancy Binks-Lyman and Frank Lyman
Brenda Birkle
Julie Birrer
Joan Blatt
Blue Spruce Cleaners
Pamela and Dwight Bode
Bertha Bodenheimer

Linda and Ed Boenisch
Mark and Kirsten Bohlinger
Amy and Paul Boillot
Mikala Bolkovatz
Lynne and Rick Boomgaarden
Elizabeth and Bruce Bowen
Carol Bowers and Mike Kraft
Tina and David Box
Patti Boyd
Dr. Judy Boyle and Dr. Russell Nelson
BP
Anne and Even Brande
Sheila and Kevin Brazell
Sharon Breitweiser
Bressler Insulation, Inc.
Kathy Bressler
Eileen Brians
Kara Brighton and Justin Farnstrom
Sarah Brino and Marc Tetenman
Dan and Julie Bromley
The Brooks Foundation
Shannon Brooks Hamby and Curt Hamby
Sarah Brown Mathews
Sandra H. Brown
Teresa and Bruce Brown
Lauren and Edward Browne
Michael Bruck
Amy and Bomber Bryan
Arlene Bryant
George Bryce
BT Real Estate
Kathy and Bruce Bummer
Mary D. Bunning
Denise Burke
E. James and Linda Burke
Indy Burke
Bruce Burns
Business Aviators, Inc.

BW Insurance
Frank Byrne and Theresa Zacharias
Sally and Jim Byrne
Lorie Cahn and Doug Brown
Jill Callahan
Robin and Phil Cameron
Campbell County
Campbell County Opportunities Fund
Capitol Communications, Inc.
Betsy Carlin and Becky Watson
Barbara and Jerry Carlson
Carpenter & Sons, Inc.
Lisa Carpenter
Father Michael Carr
Cathy Carson
Jackie Carter
Jeannette and Duke Carter
Peggy Carter
Jim and Maureen Casey
Shawn Casey



Teri Cassidy
Sharleen Castle
Connie Sloan Cathcart and Pete Cathcart
Susan and Brad Cave
Century 21 Bell Real Estate
Ed and Shirley Cheramy
Colleen and Paul Cherrett

Cheyenne Housing and Community Development
Cheyenne Light Fuel & Power
Cheyenne Orthodontics
Cheyenne Random Acts of Kindness
Cheyenne Regional Medical Center
Cheyenne Urological PC
Cheyenne Women's Clinic, PC
Joann and Joe Cioffi
Val and Daniel Cirbo
City of Casper
City of Cheyenne
City of Gillette
City of Laramie
Carey Clark
Lori Clark-Erickson and Chris Erickson
Story Clark Resor and Bill Resor
Clearview Strategies
Deborah Clemens and John Zendler
Toni Cline
Cloud Peak Energy Resources LLC
W. J. Coates
Kristen Cogswell and Rod Fordahl
Courtney Cohen
Katherine and Clifford Cohn
Coldwell Banker The Property Exchange
Karen and Jim Coleman
CollegeAmerica
Judy Collins
Cheyenne Area Combined Federal Campaign
Community Action Partnership of Natrona County
Community Foundation of Jackson Hole
Continue Care Home Health
Converse County Bank
Cony Corporation
Dara and John Corkery
Joanne and John Cornelison
Janet and John Costello
Jessica Costello
Diane and Curt Cox
Julia and William Cox
CPA Group of Laramie

Lana and Jeff Crabtree
Shirley Craighead
Brenda and Jim Creel
Cross Charitable Foundation
Kathy and Bob Cummings
Laura Curran
Wendy Curran
D A Davidson & Co
Samin Dadelahi
Cindy and Matt Daly
Sandra D'Amico
Julie and Paul D'Amours
Daniels Fund
Mitch Dann
Daughters of Penelope, Olympus Chapter 6
Charlotte and Maron Davis
Dr. Devra Davis and Richard Morgenstern
Dr. and Mrs. Harmon Davis, II
Jaime Davis
Alexandra Dawson
Jean, Tim and Anna Day
Judy and Don Day
Teresa De Groh and Arne Jorgensen
Sue and Pete Dennis
Department of Family Services
Department of Workforce Services
Design Construction, Melanie and Edd Collins
Carla DeVille
Martha Devine

"At CLIMB, success isn't just about learning a trade or getting a job. It's about transforming lives for the future and changing the generational cycle of poverty, one family at a time."

RITA MEYER,
ROCKY MOUNTAIN POWER FOUNDATION

Devon Energy Corporation
Jennifer DeWitt Walsh
Lori and Don Dickerson
Cissy Dillon
Barbara Dilts
John Dinneen
Marietta Dinneen
Ray Fleming Dinneen and James Dinneen

Beverly Dinnel
Judy Dixon and Rob O'Connell
Mary Lee and Dennis Dixon
Tracy and John Dooley
Debra Dorminey



Jonathan Downing
Pamela Downing
Dray, Dyekman, Reed & Healey PC
Paul Dykeman and Pauline Towers-Dykeman
Trey Dykeman
Lisa and Chad Driewer
DRM, Inc.
Susan and Ken Dugas
Cathy Duncil
Connie Dunivent
Jason Dunlop and Big D Signature Construction
Christi Dutro
Gregory Dyekman

ED + JOB = \$ Scholarship Fund of the Wyoming Community Foundation
Edelweiss Donor Advised Fund of the Wyoming Community Foundation
Kim and Rob Elder
Crusita and Martin Ellbogen
John P. Ellbogen Foundation

Ruth R. Ellbogen Foundation
Brenda and Bob Elliott
Ellis Public Affairs
Fred and Keren Emerich
Mary J. England
Etchepare Family Foundation
Baylie and Paul Evans
Pamela Evans and Minh Tran
Factory Information Technology
Nancy and Mike Faems
Tucker and Carol Fagan
Family Campers and RVers
Stephanie Fanos
Aida Farag
Marcie and Mark Feldman
Joni Fenwick
Jean and Dick Ferguson
Jo Ferguson
Brenda and Pat Fernandez
Jacqueline Ferrall
Regena Field
Dr. Lisa Finkelstein and Dr. Marc Domskey
Chris and Cate Finlay
Valerie and Patrick Finnegan
First American Title
First Interstate BancSystem Foundation, Inc.
First Interstate Bank - Cheyenne
First Interstate Bank - Jackson
First Interstate Bank - Laramie
Fish Creek Veterinary Clinic
Denise and Andrew Fisher
Caryn and Timothy Flanagan
Francine Fleming
Heather and Patrick Fleming
Penny and Benjamin Fogel
Dave Foreman
Myrtle Forney
Jennie Fowler
Justice Catherine Fox
Natalie and Sheldon Frankel
John and Theresa Freeman
John Freeman
Friendship Mariners, First Presbyterian Church
Becky and Tom Frisbie

INVESTORS

Gannett Peak
Technical Services
Roxanne Garaventa
Jeanne Gardner
Alexis and Tyler Garrett
Glen Garrett
Kim and Walt Gasson
Linda and George Gault
Hattie and Jim Geesey
Gwen Geis
GFWC Women's Civic
League of Cheyenne
Louise Gignoux
Margaret Gilday
Gillette Evening
Rotary Club
Sheila Gleason
Patricia Goble
Leo Gonzales
Christine Goodman
Sandra and Derek Goodson
The Goodstein Foundation
Sarah Gorin and
Bern Hinckley
Pete Gosar
Drs. Lamia Goual and
Mohammad Piri
Colleen and Bob Grady
Betsy Morris Graham
Grand Fishing Adventures
- Mike Rheam, Jamie
Mackintosh and
Emery Rheam
Logan Graves
Myrna and Stephen
Greenberg
Joy and Tony Greene
Mary Greene
Madoka Grenvik
Groathouse
Construction, Inc.
Paula Grosch and
Mike Wardell
Elizabeth Guille
Vicki and Thor Gunderson
Monique Gustin
Guthrie Family Foundation
Mary Guthrie
Nancy Guthrie
Sylvia Hackl
Jim and Estelle Haeefe
Christina Hagar
Maggie Hagen

Alyson Hagy and
Bob Southard
Vickery Fales Hall
and Bryant Hall
Hall Construction, LLC
Halley & Murray, LLC, CPAs
Stig and Beth Hallingbye
Mills and Mike Halpin
Francesca and
Mike Hammer
John and Connie Hansen
Catherine Hansen-Stamp
and Barry Stamp
Barbara Harding
Diane Harley
Ruth Harrington
and Tim Bradley
Randy and Diane Harrop
Jan and Bob Hartman
Carey D. Hartmann
Hathaway & Kunz, PC
Nick and Nicole Hauser
Hawkins, Kominsky,
Devries & Associates, PC
Shawn and Audra Hawkins
Bruce Hayse
J.J. Healy
Jim and Peggy Hearne
Linda Heath
Debbie and John Hechinger
Rowena Heckert
Susan and Bill Heiss
Cheryl and Robert Hemphill
Harmony Hendricks
Barbara Herman
Kyndra and Gabe Herrera
Sharon and Dale Hilpert
John J. Hines
Karen Hines
Judy Hinkle
Molly and Scott Hirschfield
Hirst Applegate, LLP
Carole and Norm Hofley
Alice and Tom Hogarty
Holly Hogarty
Marsha and Mark Holden
Holland & Hart LLP
Carol Holland
Susan and Shane
Hollingsworth
Jennifer and Navar Holmes
Trudi and Tyler Holthouse

Mark Houser
Beth and Paul Howard
Shay Howlin and
Jeff Gruver



“Through CLIMB, children get to see their moms develop skills, take risks that they haven’t taken before, and face their own fears and personal challenges in the pursuit of their goals. That’s among the best investments you can make in children.”

LAURA AND
TED LADD, WILSON

Elizabeth Hoy
HUB International
Mountain States LTD
Nancy Hughes
Pennie Hunt Robinson
Judy and John Hursh
Lynn Hutchings
Sue Ibarra
Idaho National Laboratory
Intermountain Combined
Federal Campaign
Lori Iverson and
Chris Harder
Sara and Juan Izaguirre
J Vasquez
Construction LLC
Jackson Council of
Catholic Women
Luke and Laura Jackson
JALH Health Services

Jannotta-Pearsall Family
Fund of the Community
Foundation of Jackson Hole
Rob and Cathy Jarosh
Roxanne Jarvis
Jefferies Group LLC
Marilyn and Ronn Jeffrey
Amy and Lawrence Jenkins
Dossanne and
Jesse Jenkins
Jill and Bob Jensen
Jay A. Jerde
Karen Jerger and
Chuck Harris
Maura Lofaro Harrower
Joannides Family
Foundation / Halladay
Motors, Inc.
Connie and James Johns
David R. Johnson
Jim and Tammy Johnson -
Harold F. Johnson Masonry
Sheri and Cody Johnson
Stewart Johnson
Susan Johnson
Jonah Bank Mortgage Team
Jonah Bank of Wyoming
- Cheyenne
Gregg and Dorrie Jones
Becky Jordan
Tom and Leanna Jordan
Jean and Pete Jorgensen
Laramie County
Commissioner Kailey
John and Lori Kapeles
Jo Anne Kaper
The Mayer and Morris
Kaplan Family Foundation
Jeanine and Pete Karns
Norine Kasperik
Sunny and James Kaste
David and Linda Kathka
Tim and Jamie Kearley
Luette and Michael Keegan
Cathy Kehr and Remy Levy
Elizabeth and Matt Kelly
Suzanne Kemmerer
Ken’s Toyota
Sarah and Renny Kerr
KIA of Cheyenne
Cherry Kildow
Sarah and Robert Kilmain
Kinskey Family Foundation

Lorilyn and Gary Kiren
Lindi and Alan Kirkbride
Diana Kitchen and
Gerald Kitchen
Scott Kitchen
Mortimer and Sabine
Kline - Haute People.com
Nancy and Marty Knaub
Knife River Corporation
Knights of Pythias,
Damon Lodge No. 3
Carl and Emily Knobloch
Kraig Kobert CPA
Tiffany Kooren
Patricia and Bob Krause
Velma and Con Kreuzer
Nicole Krieger
Barb and Tony Kruger
Molly and Aaron Kruger
Sandra and Charles Ksir
Marcia Kunstel and
Joe Albright
Jane and Charles Kusek
Kristin Ladd
Laura and Ted Ladd
Carole and James Lamanna
Dan and Maggie Land
Kathryn and Jack
Landon, Jr.
Marlene and Peter Lang
Laramie Music Teachers
Association
Laramie County
Laramie County
Community College
Larimer Family Foundation
Diana Larsen
Kirsten Larsen
Louise Lasley
Wilma and Carl Lathrop
Leadership at Play
Ms. Brinda R. Lee
Jamie and Joe Legerski
Alex Lemieux
Sarah and Khale Lenhart
Nina and Brian Lenz
Letram Enterprises
Levin Strategic Resources
Jody Levin
Jamie and Keith Liberty
Robin and Earl
Sams Lightner
Lincoln County
Carol and Steve Lindly
Carol and Jim Linton

Lindsay Linton
Janice and Thomas
Lippincott
Little America
Kristin Livingstone
Liz Lockhart
Patty Lockhart
Shauna and Cody Lockhart
Tracy Logan
Long Reimer Winegar, LLP
Katsey Long
Emily Longbottom
Doris Lowe
Nancy Loyd
Anne Lucas
Lucky’s Market Foundation
Lucky’s Market – Jackson
Lunafest
Susan and Mayo Lykes
Margaret and Garrett Lynch
Lokey Lytjen and Bill Collins
Renee Macey
Anne MacKinnon
Magpul Industries Corp.
Ginny and Ken Mahood
Laurentius Marais
Priscilla Marden and
Tony Panarisi
Brandy and Steve Marrou
Linda Mars
Kelly and Michael Martin
Anissa Martinez
Sue and Tim Mason
Ruth and Mike Massie
Carol Matteson Pascal
Jane Matthews
Gayla and Max Maxfield
Dr. Millie Maxwell
Lyndsay Rowen
McCandless
Deb McCann

“We support CLIMB Wyoming because we believe every mom deserves the opportunity to reach her full potential in the workplace, and CLIMB empowers its participants to reach that goal.”

TRACY AND JOHN DOOLEY, LARAMIE

Amy and Forrest McCarthy
Nancy McCarthy
Teri McCarthy
Kari and Matthew
McCreedy

Nicki and Brendan
McDermott
McDonald’s of Jackson Hole
McDowell Foundation
Susan McDowell
Esther McGann
Ellen A. McGee
McGee, Hearne
and Paiz, LLP
Jennifer McKillop
The McMurry Foundation
Susie McMurry
John McPherson, DDS
MDU Resources
Foundation – Knife River
Kate and Brad Mead



Governor and Mrs.
Matthew Mead
Mechanical Systems, Inc.
Howard and Sally Meeker
Carol and Art Merrell
Sherrie and Clyde Merrow
Dr. Larry and Vicki Meuli
Rita Meyer
Susan Mick and
Bob Gordon
Mile High United Way
Brenda Miller

Christine Miller
Heath Miller
Susan Miller
Kahla Mills
Amy and Jason Mitchum
Krista and Jed Mixer

Peggy and Bryan Monteith
Amanda and Trey Moore
Cathy and Fred Moore
Erin and Ross Moore
Jane and Darrell Moran
Pamela Morgan
Carole Lee and Don Morris
K.J. and Craig Morris
The Mortgage Source
Sharee Moser
Anne and Tom Muller
Murane & Bostwick
Charlene Murdock
Maggi and Nick Murdock
Murray Properties
Caren and Ed Murray

Natrona County
Kayleigh Nauman
Chelsea Neal
Abigail Nelson
Carolyn and Bob Nelson
Dan Nelson
Donna Nelson
M.J. Nevarez
Sandra Newland
NewLevel Group
Patricia and Jake Nichols
Jeanine and Robert
Niemoller
Kathryn Niner
John Nissenbaum
Ellen Nolan APRN, PC
Alli Noland
David Northrup
Rose and Ron Novak
Amber Nuse
Julie and Will Obering
Andi and Matt Odell
Erin O’Doherty and
James Johnson
Sherry and Mick Okray
The Olsons

INVESTORS

Joshua Olson
Leonora Orejuela and
Dr. Alejandro Munoz
Lyndsay and John Orr
Lucie and Harry Osborn
Kathleen Osterman-
Meisner and Greg Meisner
Wendy and Joel Ostlind
PacifiCorp
Jennifer Page
Kevin and Lisa Paintner
Do and Jack Palma
Susie and Stuart Palmer
Karen Parent
Cynthia Patras
Lane Patten and
Beau Littell
Clare Payne Symmons
PBI Operations
Peak Promotions, Kent
and Kari Shriner
Mona Pearl
Todd Pearson



Diane Penna Gorski
P.E.O. Sisterhood Chapter S
P.E.O. Sisterhood Chapter Z
Gwen and Dan Perdue
Alan Peryam
Ruth and Bob Peters
Vicki and Paul Peters
Leslie Petersen and
Hank Phibbs
Ruth Ann Petroff
and Mark Barron
Debbie Phillips
Susan Pieper Bailey
Tayloe Piggott
Shirley and Paul Piper
Lollie Plank
Dona Playton and
Rolly Maldonado

Caroline and Mike Poelma
Mary Pokorny and
Jeff Bjornsen
James D. & Bess S.
Polis Foundation
Frances Pollak and
Ernest LaBelle
Amy Poor
Matt Pope
Don and Virginia Porter
Powder River Energy
Foundation
Powder River Office
Supply, Inc.
Paula Poythress
Thomas Preheim Family
Leeann Prichard
Chris and Philip Pridmore
Process Service of
Wyoming, Inc.
Nancy Prosser
Psychological and
Consulting Services, PC
QEP Resources, Inc.
Marianne and Bill Quinn
Vickie Quisenberry
R&R Rest Stops
Pamela and Jerry Rankin
Harriette and Jack Ratchye
RBC Wealth Management
RBC Dain Rauscher
Bart Rea
Liz Rea
Ann and Ralph Redman
Melissa and Robert Regnell
Lynn Reynolds
Shannon and James
Rezanina
Mike and Jamie Rheam
Gwen Rice
Karen and Greg Rich
Annie and Travis Riddell
Nancy and Dick Riddle
Riegel Body Shop, Inc.
Kristen and Jerimiah
Rieman
Christi and Geof Roberts
Luanne Roberts
Roxanne and Jeff Robinson
Rocky Mountain Power
Rocky Mountain
Power Foundation
Barbara and John Rogers

Elisabeth Rohrbach
Janelle and Andy Rose
Michele and Jim Rose
Elaine Rosenthal
Patricia Roser and
Andrew Langford
Rotaract Club of Cheyenne
Elaine and Dale Roth
Heather and Chris Rothfuss
Ginny and Bob Rowland
Samuel Runyan
Christy and Matt Russell
S&S Builders, LLC
SAGE Technical Services
Victoria and Erik Saltzman
Sam's Club - Cheyenne
Susan and Doug Samuelson
John Sanderson
Karen Sapp
Kristine and Anthony Sara
Kate Sarosy and
Scott Sissman
Lorraine Saulino-Klein
Scarlett Family Foundation
Debbie Schlinger
Pamela Schliske
Neva and John Schmechel
Korin and Derek Schmidt
Mary and Erich Schmidt
Patterson Schmotzer

“CLIMB graduates possess unmatched strength, selflessness, drive and determination to provide a safe and secure life not only for themselves, but for their children as well.”

TYLER AND LEXIE GARRETT, CHEYENNE

Carol and Chuck
Schneebeck
Cathy Schneider
Lisa and Robert Schober
Lori and Gary Schoene
Theo and LeeAnn Schuff
Douglas F. Schultz,
Schultz Law Firm, LLC
Cheryl and Bill Schwartz
Leonard R. Scoleri
Andrew Scott
Susan Scott
Roy Searle

Jessica Seders
Seidler Foundation
Bonnie and Doug Self
Dr. Shaun S. Shafer
Yvonne Shafer
Marianne and Dicky Shanor
Sonja Sharkey
Donna Sheen
Kimberly Shepherd
Jenny and Danny Shervin
Trey Sherwood
Joni J. Sides
Sierra Trading Post
Dorothy and Art Sigel
Silver Star Communications
Rebecca Simmons
Barbara and John Simms
Lorene Sims
James Slater
Angie and Craig Smith
Heidi Smith
Jayne and Loyd Smith
Sammie Smith
Shannon Smith and
Scott Holthus
Dr. Laura and Dr.
Lane Smothers
Pam Snell
Kate and Dave Sollitt
Solvay Chemicals, Inc.

Nancy Sorenson
Soroptimist Foundation
Soroptimist International
of Laramie
Sotheby's International
Realty
Wendy Soto
Margaret Spearman
Bob Spicer
Spirit Dance Foundation,
Florence Lemle
Spradley Barr Motors, Inc.
Jeanie and Fred Staehr

Tabitha Standifer
State Farm Mutual
Automobile Insurance
Steil Surveying
Services, LLC
Mimi and Bobby Stein
Robert Steinke
Stevie and Wyatt
Priceless Foundation
Julie and Jonathan Stone
STS Foundation
Sundahl, Powers,
Kapp & Martin, LLC
Sunrise Rotary Club
of Laramie
Summit Exploration
- Frosty Kepler
Joy and Ron Surdam
Susan and Jeffrey Sussman
Sweetwater County
Pam and Phelps Swift
Family Fund of the
Community Foundation
of Jackson Hole
Janet and Duane Swinton
Taco John's International
Jenny and Linikoni Taufa
Erin and Shawn Taylor
Laura Taylor and
Eric O'Connor
Tecumseh Foundation
Tad Teeples
Jennifer and Michael
Tennican
Mrs. Betty Terrill
Tessa's Organic Coffee
Stan and Cathy Tetenman
Teton County
Teton Orthopaedics
Dave Teubner
Stephanie Teubner
Lori Taylor and
Robert Thorn
Elizabeth and Tim Thorson
Gerry and Margie
Thorvaldson
Lesha and Scott
Thorvaldson
Representative Mary
Throne and Kevin Boyce
TJX Foundation
Susan and Ken Tobin
Jan Torres
Terry and Gary Trauner
Eydie and Ben Trautwein
Amber Travsky

Wendy and Wallace
Trembath
True Foundation
Melanie and David True
Sandi and Bruce Tully
Joanne and Chuck Tweedy
Jan Twyford
Wendy Tyson
Amy and Steve Unfried
Juliet Unfried



Unitarian Universalist
Fellowship of Laramie
United Methodist Women
United Way of
Campbell County
United Way of
Laramie County
United Way of
Southwest Wyoming
US Bank Foundation
Tammy Valdez
Gay and Phil Van Horn
William Vance
Susan and Jeffrey
Vandermolen
Cindy Vandewark
Shandi Vasquez
Polly and Dick Vaughan
Collin Vaughn
Gregory and
Lindsay Vaughn
Verisk Analytics
Jeff Vincent, Vincent
Financial Services
Kristin and Jim Vito
Margie and Michael
Von Flatern
Josie Voight and
William Winkler
Michael Von Flatern

Mary Vrooman
Jodi Wagner
Polly and Sandy Wakeman
Carmel Wallace
Doreen Wallace
Pamela and Michael
Wallace
Sandra and Dennis Wallace
Mackenzie Walles
Rick Walls
Walmart Distribution
Center
Walmart Foundation
State Giving Program
Walmart Supercenter
- Cheyenne South
Walmart Supercenter
- Gillette
Walmart Supercenter
- Laramie
David and Christel Walrath
Barbara and Charlie Walter
Betty and Don Walters
Ward Insulation
Carter Ward
Doreen Ward
Linda and Dale Ward
Warehouse Twenty
One, Dave Teubner
Warren Federal
Credit Union
Sue Wedel
Dr. Eric and Maida Wedell
Erin Weisman
Laurel and Jacob Weisz
Sherry Welch
Lynn Welker
Wells Fargo Advisors,
Jared Black
Wells Fargo



Robert Wemple
Shirley and Eugene Wendt
Western Sky Design, LLC
Jim and Heather
Wetzel Family
Wheeler Family Foundation

Bill and Tina Whipple
Diane and Dan White
Ronda and Dave Whitman
Stacey Whitman Moore
and Wade Moore
Janet and Bob Whitmire
Kurt Wickey II
Ed Wigg
Chris and Erich Wilbrecht
Kathy Wilder
William E. Wecker
Associates, Inc.
Mike Williams
Sandra and Roger Willis
Martha and Douglas Wilson
Christine and Lance Windey
Jodie and Chuck Wing
WINhealth
Cheri, Jeffrey, Katy
and Mike Witz
Jane Wohl
The Wold Foundation
Wolf Creek Charitable
Foundation
Womentum
Woodhouse Roden
Nethercott, LLC
Mike and Stephanie
Woodward
WPX Energy
Whitney Wright
Tammy and Adam Wuertley
Wyoming Child
Support Association
Wyoming Community
Foundation of Casper
Wyoming Community Gas
Wyoming State
Bank - Cheyenne
Wyoming State
Bank - Laramie
Wyoming Title & Escrow
Wyoming Trial Lawyers
Association
Wyoming Women's
Foundation, a component
fund of the Wyoming
Community Foundation
Shannon and Jamie Yarrow
Laura and Mark Yockey
Barbara Zelazo and
Michael Scher
Zimmerman Family
Foundation
Zonta Club of Cheyenne
Zonta Club of Laramie
And 64 Anonymous Donors

INVESTORS

Thank you to our **FUNDING FUTURES DONORS** for their **multi-year pledges, which contribute to our stability and help us plan ahead.**

Barbara and Anthony Andrikopolis
Mary and Dan Armour
Mickey Babcock
Kelly and Eric Barlow
Battle Creek Community Foundation
Lisa and David Carlin
Maya and Mike Crothers
Charles Engelhard Foundation
Missy Falcey
Sara Flitner and Bill Wotkyns
Matt and Kathy Garland
Jane and Joe Giovanini
Sandy Hessler
Jane and Tom Hill
Berte and Alan Hirschfield
The Hladky Family
Bland and Liza Hoke
Harriett and Frosty Kepler
Carrie and Scott Kirkpatrick
Kathy Kline
Jean and Jason Lewis
Leslie Mattson
Newton Foundation Fund
Jack and Carole Nunn
Susan and Peter Ordway
Mary Shafer-Malicki and Pat Malicki
Shelley Simonton and Matt Bowers
Margot Snowdon and Yves Desgouttes
Dr. Richard and Sue Sugden
Noa and Ted Saryk
Allan and Frances Tessler
Karla Tessler and Matt Deehan
Sidney and Oliver Walter

Gifts were made IN MEMORY OF:

Edna Cecilia Beavers
Janice Carter
Mary Margaret Devine
Ruth Estes
Ethel Friess
Dorothy Hannon
Rose Huggins
Mary F. Johnson
Petie Larson
Wig MacKinnon
Mary Ellen McCarthy
Elaine Miller
Florence Neering
Alice Northcutt
Velma E. Quinn
Virginia Rylands
Nancy Shafer
Illa Searle
Susan Seders
Rose Simmons
Karol L. Slater
Blanch Stice
Claire Traylor
Hilda Ann Vick
Sue Wedel
Donna Yester

Gifts were made IN HONOR OF:

Penne Ainsworth
Mary Armour
Mary G. Armour
Molly Armour
Lynn Barnhart
Arlene Berger
Rosemary Boyle
Janet Brenann
Betsy Brino
Helen Brino
Sarah Brino
Gayla Brown
Amy Bryan
Jeanne Bryan
Val Burbidge
Doris Carpenter
Peggy Carter

Cathy Connolly and Julie Heggie
Barbara Crews
Cindy Daly
Julie D'Amours
Ray Fleming Dinneen
Betty Eaton
Julie Faupel
Pat Fleming
Katie Fraley
Sheila Gleason
Melissa Granato
Tracy Haling
Bobby Hathaway
Marge Hauser
Joy Hepler
Katie Hogarty
Nancy Hogarty-Baker
Danielle Holden
Cara Johnson
Jo Anne Kaper
Justine Kemp
Lisa Kinney
Jennifer LeBeau
Liz Lockhart
Kit Long
Susannah Lynch
Betty Malicki
Martha Marquardt
Ruth McDonald
Christine Miller
Stacy Murphy
Rosemary Nicholls
Cathy Olson
Mary Bauman Polite
Trish Preheim
Gingee Prince
Karen Sapp
Joan Silvi
Sherry Smith
Julie Stone
Marc Tenteman
Margie Thorvaldson
Barbara Trachtenberg
Beth Ward
Eileen Ward
Linda Ward
Sue Wedel
Casey Wilson

MOTHER'S DAY MATCH DONORS

Lynn and Foster Friess
J.J. Healy
Carole & Norm Hofley
Mary Shafer-Malicki
Noa and Ted Saryk
Pam and Phelps Swift
Anonymous



IN PARTNERSHIP WITH:



CLIMB Wyoming makes every effort to ensure the accuracy of our investor list. Please alert us to any changes or corrections by calling Erin O'Doherty at 307-316-1459.



BOARD

Mary Shafer-Malicki
PRESIDENT
Father Carl Beavers
TREASURER
Dave Teubner
SECRETARY
Kelly Barlow
Wendy Curran
Frosty Kepler
Jean Lewis
Mary Lynne Shickich
Beth Worthen

LEADERSHIP

Ray Fleming Dinneen, Psy. D.
FOUNDER AND EXECUTIVE DIRECTOR
Colleen Cherrett
STATEWIDE DIRECTOR OF PROGRAMS
Shannon Brooks Hamby
STATEWIDE DIRECTOR OF COMMUNICATIONS
Sue B. Mason
STATEWIDE DIRECTOR OF MAJOR GIVING
Sarah Brown Mathews
STATEWIDE DIRECTOR OF DEVELOPMENT
Donna Nelson
STATEWIDE DIRECTOR OF OPERATIONS



SITE OFFICES

Casper (307) 237-2855
casper@climbwyoming.org

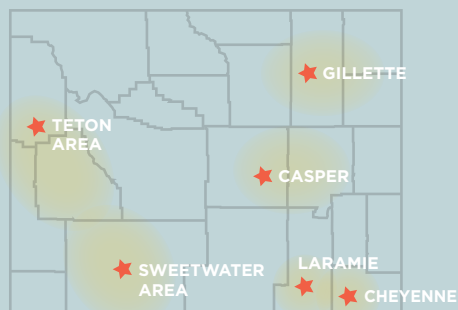
Cheyenne (307) 778-0094
cheyenne@climbwyoming.org

Gillette (307) 685-0450
gillette@climbwyoming.org

Laramie (307) 742-9346
laramie@climbwyoming.org

Sweetwater Area (307) 509-0764
sweetwater@climbwyoming.org

Teton Area (307) 733-4088
teton@climbwyoming.org



.....
For more information about becoming an employer partner, program participant or investor, contact:

CLIMB's Home Office
1001 W. 31st Street, Cheyenne, WY 82001
(307) 778-4126

info@climbwyoming.org
www.climbwyoming.org

 **Stay connected!**